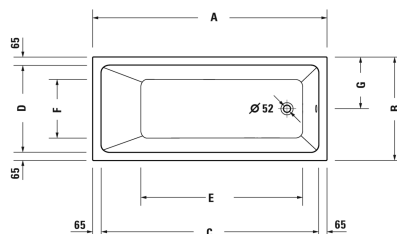
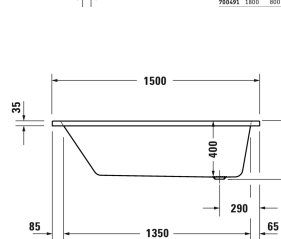
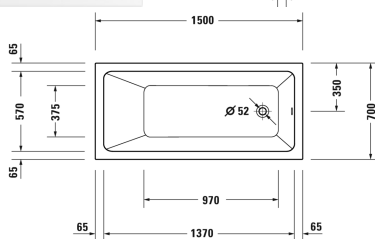
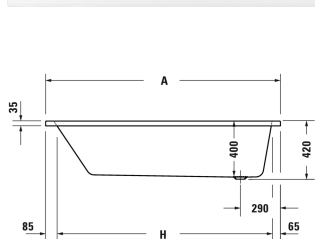


Bathtub # 70048700000000

| < 1500 mm > |



| | A | B | C | D | E | F | G | H |
|--------|------|-----|------|-----|------|-----|-----|------|
| 700487 | 1500 | 700 | 1370 | 570 | 970 | 375 | 350 | 1550 |
| 700488 | 1600 | 700 | 1470 | 570 | 1075 | 375 | 350 | 1650 |
| 700489 | 1700 | 700 | 1570 | 570 | 1175 | 375 | 350 | 1750 |
| 700490 | 1700 | 750 | 1570 | 620 | 1175 | 425 | 375 | 1750 |
| 700491 | 1800 | 750 | 1670 | 620 | 1275 | 425 | 400 | 1850 |



| Bathtub | Dimension | Weight | Order number |
|--|---------------|-----------|----------------|
| rectangle, built-in, with one backrest slope, sanitary acrylic , Filling capacity 95 l , water level 300 mm | | | |
| Colors | | | |
| 00 White Alpin | | | |
| Variant | | | |
| Basic model | 1500 x 700 mm | 18.000 kg | 70048700000000 |
| Suitable products | | | |
| Bathtub anchors for mounting and support of D-Code/D-Neo/Duravit No.1 bathtubs and D-Code shower trays, 3 pieces, | | | 790125 |
| Waste and overflow chrome, for D-Code/D-Neo/Duravit No.1 bathtubs with outlet sidewise, outlet diameter 52 mm, length of bowden cable 530 mm, | | | 790225 |
| Rubber profile for noise reduction, length: 3300 mm, Width: 70 mm, | | | 790126 |
| Support frame for D-Code/D-Neo/Duravit No.1 bathtubs and D-Code shower trays, with length > 1000 mm, height-adjustable from 115 - 180 mm, height-adjustable from 135 - 165 mm if a noise reduction set for shower trays is used, 2 pieces, | | | 790127 |
| Noise reduction set for acrylic bathtubs ****, Contents: noise reduction bathtub anchors, bitumen pads, rubber profile # 790126, | | | 791368 |
| Waste and overflow Quadroval with water inlet, chrome, *, for bathtubs with outlet on the side, outlet diameter 52 mm, length of bowden cable 530 mm, | | | 792201 |
| Styrene Support Box for # 700487, | | | 792439 |

Bathtub # 700487000000000

|< 1500 mm >|

All drawings contain the necessary measurements which are subject to standard tolerances. They are stated in mm and are non-binding. Exact measurements, in particular for customised installation scenarios, can only be taken from the finished piece.